



# CorePro LED PLC 2P



## CorePro LED PLC 360D 6.9W 3CCT 2P G24d

CorePro, LED, PL-C, EM/Mains, G24d, 6.9 W, 18W PL-C, 3000 K, 4000 K, 6500 K, 930 lm, 980 lm, 980 lm, CRI 82, 30000 hour(s)

CorePro LED PLC 2P integrates a LED light source into a traditional fluorescent form factor. This product is the ideal solution for uplampping in general lighting applications: it meets basic lighting requirements, offers significant energy savings, and is environmentally friendly.

### Product data

General Information	
Cap-Base	G24d
Nominal lifetime	30,000 hour(s)
Switching Cycle	50,000
Lighting Technology	LED
Flux measurement reference	Sphere
Warranty period	3 years
Light Technical	
Color Code	3000/4000/6500
Beam Angle (Nom)	360 degree(s)
Luminous Flux	930 980 980 lm
Color Designation	3000/4000/6500
Correlated Color Temperature (Nom)	3000 4000 6500 K
Luminous Efficacy (rated) (Nom)	142 lm/W
Color Consistency	<6
Color rendering index (CRI)	82
LLMF At End Of Nominal Lifetime (Nom)	70 %

Photobiological safety according to EN 62471	RG1
Operating and Electrical	
Input Frequency	50 to 60 Hz
Power Consumption	6.9 W
Lamp Current (Nom)	40 mA
Starting Time (Nom)	0.5 s
Warm-up time to 60% light	0.5 s
Power Factor (Fraction)	0.9
Voltage (Nom)	220-240 V
LED alternative to fluorescent lamp power	18W PL-C
Inrush current at mains	8.6
Max. lamp no. on MCB B type 10A - Mains	26
Max. lamp no. on MCB B type 10A – EM ballast without Compensation Capacitor.	80
Max. lamp no. on MCB B type 10A – EM ballast with Compensation Capacitor.	-
Max. lamp no. on MCB B type 16A - Mains	33

CorePro LED PLC 2P

Max. lamp no. on MCB B type 16A – EM ballast without Compensation Capacitor.	100
Max. lamp no. on MCB B type 16A – EM ballast with Compensation Capacitor.	-
Ballast Compatibility	EM/Mains
Temperature	
T-Case Maximum (Nom)	75 °C
Controls and Dimming	
Dimmable	No
Mechanical and Housing	
Bulb Finish	Frosted
Bulb Material	Plastic
Product Length	120 mm
Bulb Shape	PL-C
Net Weight (Piece)	0.065 kg
Approval and Application	
Energy Efficiency Class	D
Energy Saving Product	Yes
Approval Marks	RoHS compliance CE marking KEMA Keur certificate
Energy Consumption kWh/1000 h	7 kWh

EPREL Registration Number	2154072
CE mark	Yes
EU RoHS compliant	Yes
Flickering value (PstLM) - Flickering value as per EN 61000-3-3	1
Stroboscopic effect visibility measure (SVM)	0.4
Ambient temperature range	-20 to +35 °C

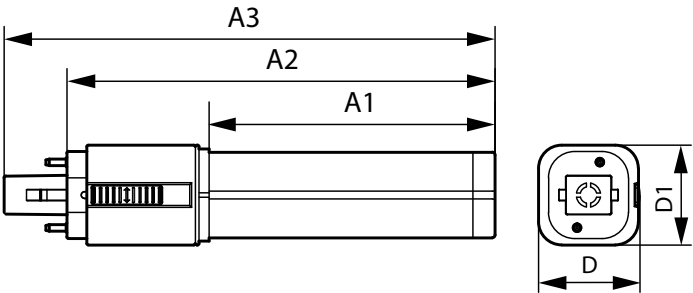
Application Conditions

can it be used in closed luminaires	Yes
-------------------------------------	-----

Product Data

Order product name	CorePro LED PLC 360D 6.9W 3CCT 2P G24d
Full product name	CorePro LED PLC 360D 6.9W 3CCT 2P G24d
Full product code	872110303503500
Order code	929004252902
Material Nr. (12NC)	929004252902
Numerator - Quantity Per Pack	1
EAN/UPC - Product/Case	8721103035035
Numerator - Packs per outer box	10
EAN/UPC - Case	8721103035042

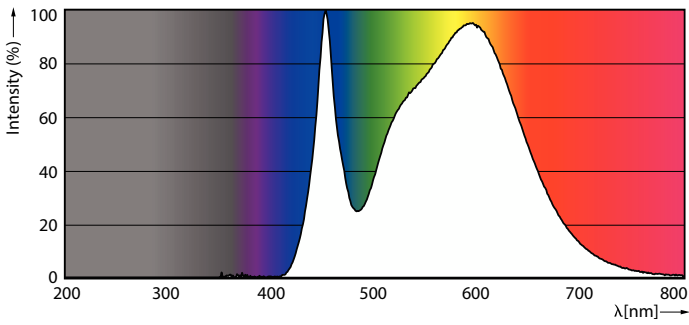
Dimensional drawing



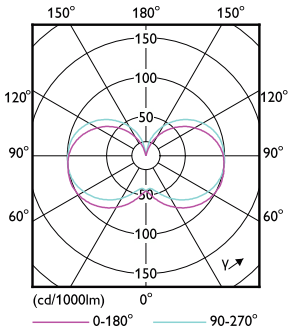
Product	D1	D	A1	A2	A3
CorePro LED PLC 360D 6.9W 3CCT 2P G24d	35 mm	35 mm	70 mm	120 mm	142 mm

CorePro LED PLC 2P

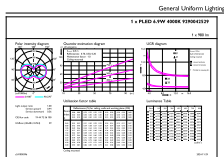
Photometric data



Spectral Power Distribution Colour - CorePro LED PLC 360D 6.9W 3CCT 2P G24d

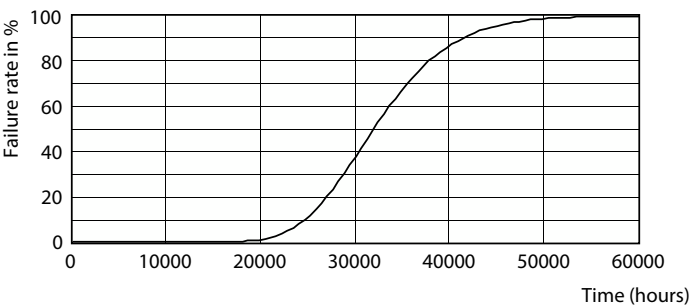


Light Distribution Diagram - CorePro LED PLC 360D 6.9W 3CCT 2P G24d

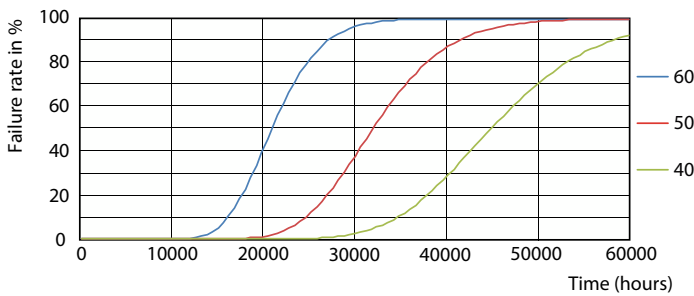


General uniform lighting - CorePro LED PLC 360D 6.9W 3CCT 2P G24d

Lifetime



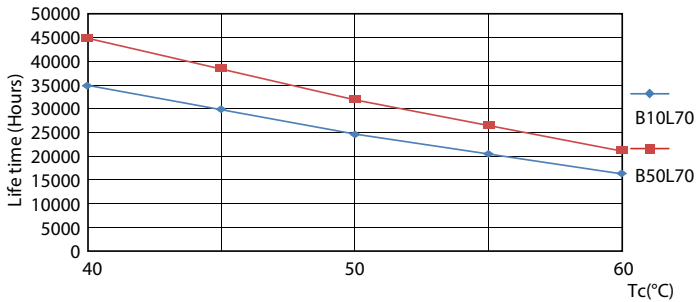
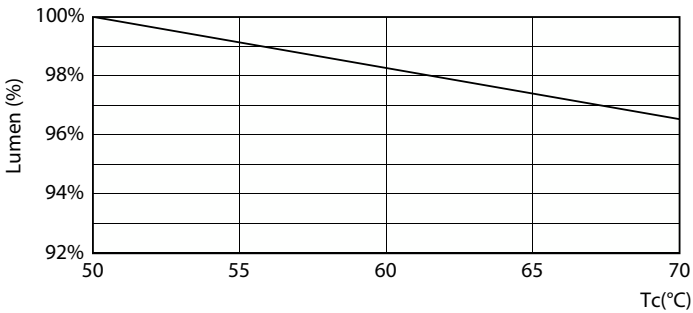
Life Expectancy Diagram



FailureRate

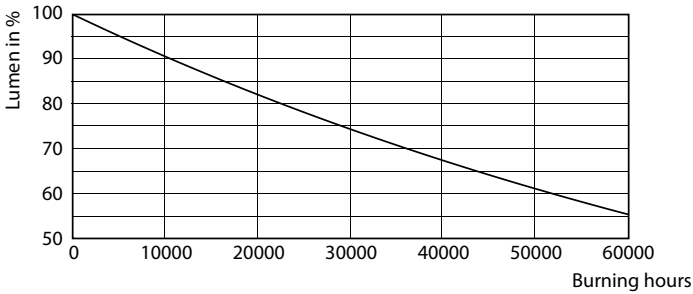
CorePro LED PLC 2P

Lifetime



Lumen Maintenance Diagram - CorePro LED PLC 360D 6.9W 3CCT 2P G24d

LifetimeVsTc



Lumen Maintenance Diagram - CorePro LED PLC 360D 6.9W 3CCT 2P G24d

