

EXTRA-N-LED-2/21, MULTIEXTRA-N-LED-2/21, EXTRA-N-LED-Em-2/21

Technical conditions of the luminaires installation ENG

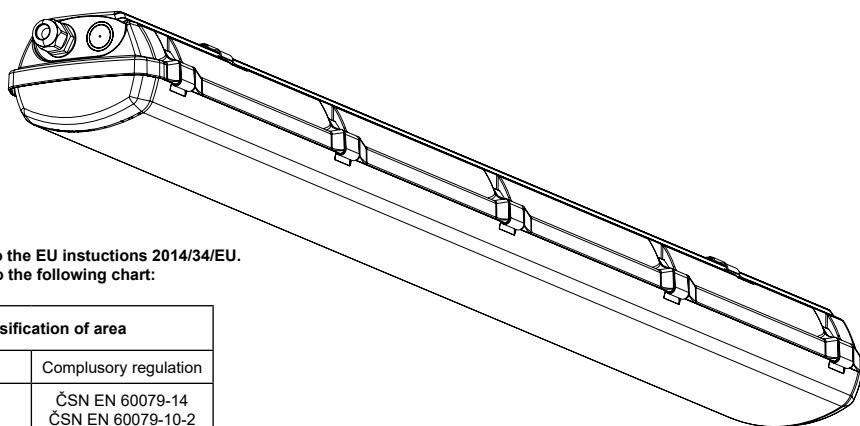
10.02.2026/ rev.3
www.vyrtych.cz

FTZÚ 24 ATEX 0020X

Ex II 3G Ex nR IIC T6 Gc

Ex II 2D Ex tb IIIC T80°C Db

IP66, class I



The explosion proof light fitting meet the standards according to the EU instuctions 2014/34/EU. They can be used in areas with danger of explosion according to the following chart:

Area with danger of explosive	Marking of exterior ambient	Classification of area	
		Marking	Complusory regulation
Danger of explosion of inflammable dust	BE3N1	ZONE 21	ČSN EN 60079-14 ČSN EN 60079-10-2
Danger of explosion of inflammable gas and vapors	BE3N2	ZONE 2	ČSN EN 60079-14 ČSN EN 60079-10-1

In case of any erving on light fitting in premises with danger of exlosion, the national saety rules and regulation for prevention of accidents are to be observed.

EXTRA-N-LED-2/21 are LED dust proof and waterproof lighting fixtures designed for lightening premises with danger of explosions.

EXTRA-N-LED-Em-2/21 - non maintained emergency lifting.

MULTIEXTRA-N-LED-2/21 - mainted emergency lifting.

Technical data:

Permitted range of operating temperatures for 220-240V, 50/60Hz

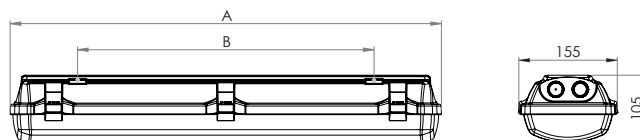
EXTRA-N-LED-2/21-2500/5000-218/236	-20°C to +60°C
EXTRA-N-LED-2/21-5000/7500-218/258	-20°C to +55°C
EXTRA-N-LED-2/21-12550-258	-20°C to +45°C
EXTRA-N-LED-2/21-10000-236	-20°C to +40°C
EXTRA-N-LED-2/21-16700/20000-258	-20°C to +40°C
MULTIEXTRA-N-LED-2/21-2500-218	0°C to +35°C
MULTIEXTRA-N-LED-2/21-5000/7500-236/258	0°C to +40°C
MULTIEXTRA-N-LED-2/21-12550/258	0°C to +35°C
EXTRA-N-LED-Em-500-2/21-218/236/258	0°C to +50°C

Nominal voltage and frequency:

for electronic ballast HELVAR:	220-240V, 0/50-60Hz
for electronic ballast TRIDONIC:	220-240V, 0/50/60Hz
for electronic ballast TCI:	220-240V, 0/50-60Hz
for emergency unit AWEX:	220-240V, 50/60Hz
for emergency unit TRIDONIC:	220-240V, 50/60Hz

Lighting fixture dimensions:

Typ	A(mm)	B (mm)
EXTRA-N-LED-2/21-218	670	460
EXTRA-N-LED-2/21-236	1280	880
EXTRA-N-LED-2/21-258	1580	1000

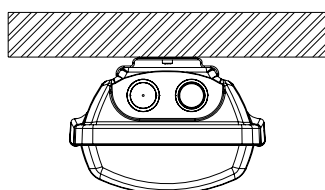


Maximum number of continuously connected luminaires for circuitbreaker type B10A

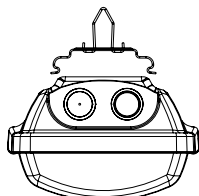
EXTRA-N-LED-2/21 MULTIEXTRA-N-LED-2/21	
EXTRA-N-LED-2/21-2500-218	23
EXTRA-N-LED-2/21-5000-218	23
EXTRA-N-LED-2/21-5000-236	23
EXTRA-N-LED-2/21-10000-236	18
EXTRA-N-LED-2/21-7500-258	18
EXTRA-N-LED-2/21-12550-258	18
EXTRA-N-LED-2/21-16700-258	9
EXTRA-N-LED-2/21-20000-258	9

Types of mounting:

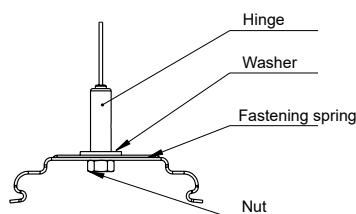
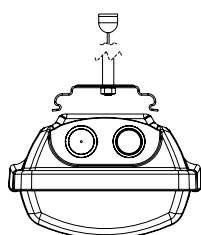
Pic. 1
With fastening spring directly on the base



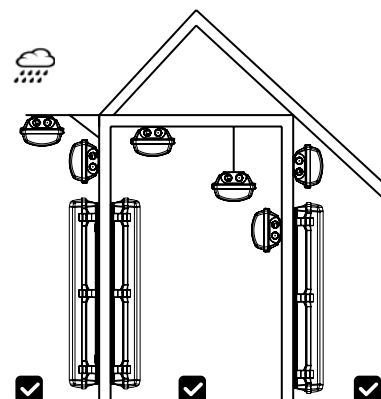
Pic. 2
With steel wire hanger (no included)



Pic. 3
With a cable suspension (no included)



Outdoor installation conditions



⚠ The luminaire is suitable for installation in outdoor uncovered zones.

Operation and maintenance instructions:**The light fittings, which operate in areas of above mentioned premises, are under the requirements resulting from compulsory regulations:**

- The light fitting must not be open, if the terminal block is alive.
- Free outlets for supply cable must be sealed with plugs M20.
- Any change or replacements of components of the light fittings, which can influence the protection before the danger of explosion, are forbidden.
- The repair of the light fittings can be done only by person with relevant qualification, only with original spare parts and in compliance with the latest regulations.

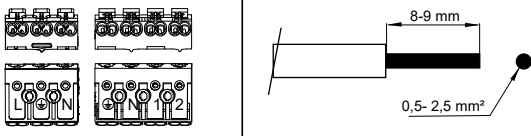
The fixtures are certified by FTZÚ, AO 210, Ostrava – Radvanice:**1) Certificate of type FTZÚ 24 ATEX 0020X from date 24.4.2024****Mounting:**

1. Remove reflector from the luminaire.
2. Remove the bag with equipment.
3. The side opening in the body plant the cable gland (which is included in the luminaire equipment), and on the other side of her body screw the nut. Cable gland nut to the body, tighten torque 2,7Nm.
4. To the hinges on the body insert clips from equipment luminaire.
5. Fasten the lighting fixture on the base:
 - a) With fastening spring directly on the base pic. 1
 - b) With steel wire hanger (no included) pic. 2
 - c) With a cable suspension (no included) pic. 3.

Note: another method of fastening is not allowed!

6. Pull the power cable through the cable gland. Tighten bushings to a state of partial deformation of the rubber sealing washers, tightening torque 2,5Nm. Supply cable must have an outer diameter in the range (see. Table sealing areas), which is a necessary condition for correct function of cable gland. Hole for power cable in the housing, which is not used cable gland (which is contained in the equipment luminaires), seal blanking plug. In the luminaire is not allowed to use respiratory protective plugs and cable glands breathing

7. Connect the supplying cable to the free part of incoming terminal strip as follows:

EXTRA-N-LED-2/21		EXTRA-N-LED-Em-2/21		MULTIEXTRA-N-LED-2/21		
L	phase conductor	L1	cond. of charging hase	L1	cond. of charging phase	
-	-	-	-	L2	cond. of switching phase	
N	neutral conductor	N	neutral conductor	N	neutral conductor	
⊕	protective conductor	⊕	protective conductor	⊕	protective conductor	

* To each pole of terminal block can be connected two conductors in cut 0, 5 - 2, 5 mm². In case of through-wiring connection it is necessary to use accessories for such connection!
In case that the label with the description of connection is glued on the reflector of luminaire, you must do connection according this description.

8. Fasten reflector back to plastic handles.
9. Insert the stainless clips (which are included in the equipment) into the prepared plugs on body.
10. Attach the glass cover on the fixture:
 - attach the optical cover that all round landed on a seal which is disposed in the fixture
 - Optical cover secure by the stainless steel clips, secure each clip with the screw included with the luminaire.
11. The initial inspection must be provide according to EN 60079-17, Table 1.

Test of operation:

For correct operation it is necessary to observe enclosed instruction about testing of emergency fixtures. Switch the luminaire off the mains voltage. The emergency LED module must light. The green LED in the reflector is off. Should the emergency lamp be extinguished within the test period though the battery is fully charged, the latter will have to be replaced by a new battery set.

Warning: The full battery capacity will be available after approximately three charging/discharging cycles.**Battery change:****"Replace the battery in a non-explosive environment"**

Battery change is necessary when the fixture doesn't observe the conditions of rated operation period durability. In explosive area it is prohibited to disconnect battery for emergency unit. It is allowed to disconnect the fixture from supply voltage and take remove reflector from the fixture.

1. Disconnect the fixture from supply voltage.
2. Remove reflector from the housing.
3. Disconnect cable from terminal block.
4. Disconnect battery from emergency unit in non-explosive area as follows „-“black conductor and „+“red conductor.
5. Unbolt the nut of battery holder
6. Remove the old battery.
7. Screw the new battery (mark the date of operation start).
8. Connect conductors to battery as follows „+“red conductor and „-“black conductor.
9. Change the gasket of luminaire.
10. Connect the fixture to supply voltage.
11. Equip with reflector and cover. Fix it with the clips.

WARNING: The battery in the fixture can be changed for the same type or the same parameters only!!!**Table: List of cable glands:**

Cable glands	Diameter of the cable for cable glands M20x1,5
OBO V-TEC Ex	∅ 7 mm - 12 mm
CEAG CHG 960 92.. P...	∅ 5,5 mm - 13 mm
WISKA ESKE/1 (S)(-L)(-+)(-RDE)	∅ 7 mm - 13 mm
ELFIT UNI	∅ 7 mm - 12 mm
BIMED LYRA (EURO-TOP)	∅ 7 mm - 12 mm
PFlitsch - 22052st13ex (stainless steel)	∅ 9-13mm



In case of any interventions on fixture lighting in premises with danger of explosion, the national safety rules and regulation for prevention of accidents are to be observed. EXTRA-N-LED-2/21 luminaires are LED dust proof and waterproof luminaires designed for lightening premises with danger of explosions.



WARNING!!!

Potential danger of electrostatic charging.

The luminaire must be installed in the position, which does not allow the touch of persons and parts of the fixture.

The luminaire is intended for fixed installation.

The luminaire should be cleaned with damp duster only. It is necessary to keep periodic cleaning intervals of lighting fixture

Do not open under voltage.

Replace broken protective cover.

For wall installation of luminaire must be LED driver positioned facing downwards.

The luminaire can be installed only by authorized person.

When installing luminaire, observe the ESD safety using appropriate tools.

After the light source or battery is changed then is necessary to change also the gasket in the luminaire's body.

During the commissioning is not necessary to make the routine test of luminaire.

The changing of light source, gasket and other repairs of this luminaire can do only producer, its contractual service technician or a similarly qualified person with authorization from producer and only with original spare parts.

If the mounting instructions are not observed the producer cannot be responsible for incidental damages incurred.

Additional holes may only be drilled in positions marked by the manufacturer. Always use a step drill to ensure the correct diameter and minimize the risk of damaging the luminaire.




Producer included in recycling system provided by EKO-KOM Company (EK-F06070058).

Basic instructions for luminaire users:

For users of luminaires

For users of emergency luminaires

For DALI system users

 After clicking on the QR code, you will be redirected to the relevant website.