



# CorePro LED PLL

## CorePro LED PLL HF 24W 830 4P 2G11

Philips CorePro LED PLL is the ideal uplamping solution for downlights & luminaires in a wide range of general lighting applications. It integrates a LED light source into a traditional fluorescent form factor to offer superb energy savings over a lifetime that's twice as long as fluorescent alternatives.

### Product data

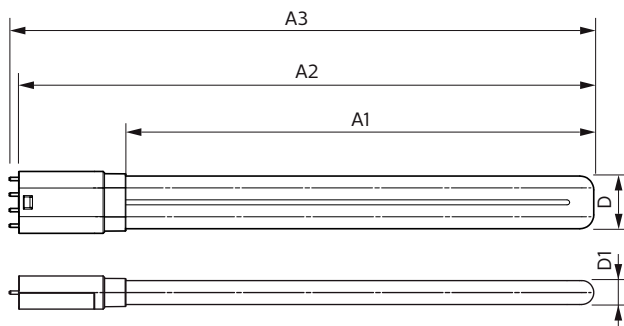
<b>General Information</b>		<b>Warm-up time to 60% light</b>		0.5 s
Cap-Base	2G11 [2G11]	<b>Power Factor (Fraction)</b>		0.9
Nominal lifetime	30,000 hour(s)	<b>Voltage (Nom)</b>		53-77 V
Switching Cycle	50,000			
Lighting Technology	LED	<b>Temperature</b>		
Flux measurement reference	Sphere	<b>Ambient temperature range</b>		-20 °C to 45 °C
		<b>T-Case Maximum (Nom)</b>		70 °C
<b>Light Technical</b>				
Color Code	830 [CCT of 3000K]	<b>Controls and Dimming</b>		
Beam Angle (Nom)	160 degree(s)	<b>Dimmable</b>		No
Luminous Flux	3,200 lumen			
Color Designation	White (WH)	<b>Mechanical and Housing</b>		
Correlated Color Temperature (Nom)	3000 K	<b>Product Length</b>		540 mm
Luminous Efficacy (rated) (Nom)	133.00 lm/W	<b>Bulb Shape</b>		Tube, single-ended
Color Consistency	<6			
Color rendering index (CRI)	83	<b>Approval and Application</b>		
LLMF At End Of Nominal Lifetime (Nom)	70 %	<b>Energy Saving Product</b>		Yes
		<b>Approval Marks</b>		TUV CE marking RoHS compliance KEMA Keur certificate
<b>Operating and Electrical</b>		<b>Energy Consumption kWh/1000 h</b>		24 kWh
Line Frequency	20000-70000 Hz	<b>EPREL Registration Number</b>		387,355
Input Frequency	20000-70000 Hz	<b>CE mark</b>		Yes
Power Consumption	24 W			
Starting Time (Nom)	0.5 s			

## CorePro LED PLL

EU RoHS compliant	Yes
<b>Product Data</b>	
Full product code	871869682839700
Order product name	CorePro LED PLL HF 24W 830 4P 2G11
Order code	929001920402
Numerator – Quantity Per Pack	1

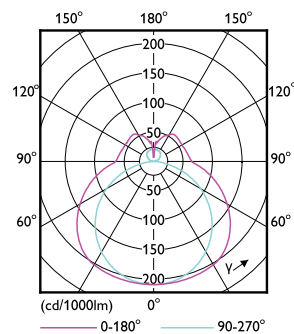
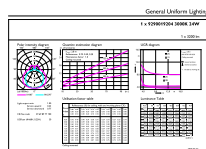
EU RoHS compliant	Yes
<b>Product Data</b>	
Full product code	871869682839700
Numerator - Packs per outer box	10
Material number (12NC)	929001920402
Full product name	CorePro LED PLL HF 24W 830 4P 2G11
EAN/UPC - Case	8718696828403

## Dimensional drawing

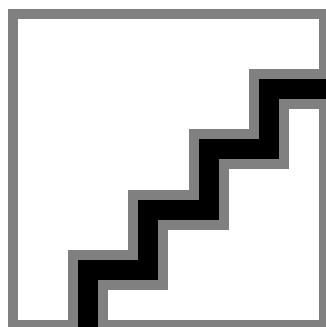


	A3				
	A2				

### Photometric data

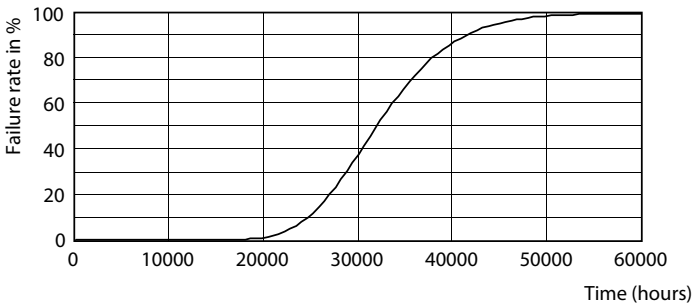
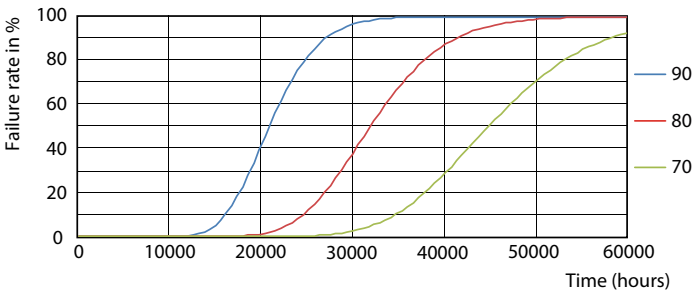


Light Distribution Diagram - CorePro LED PLL HF 24W 830 4P 2G11

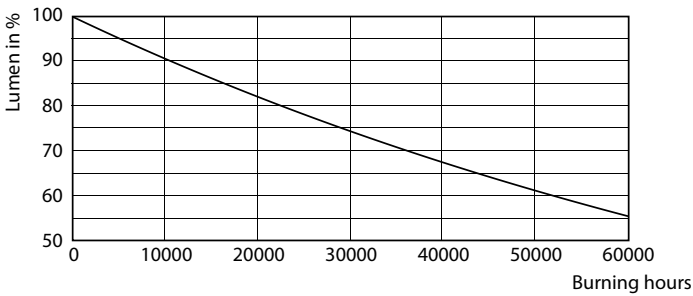


Spectral Power Distribution Colour - CorePro LED PLL HF 24W 830 4P 2G11

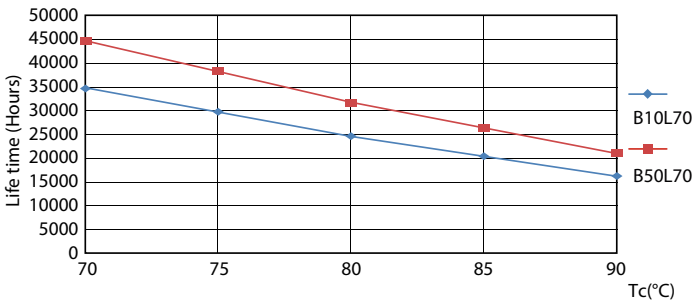
Lifetime



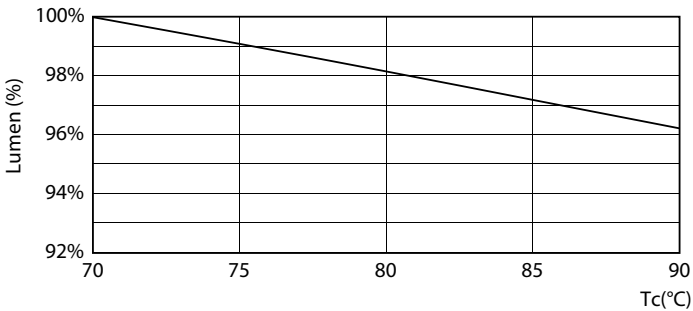
Life Expectancy Diagram - CorePro LED PLL HF 24W 830 4P 2G11



Life Expectancy Diagram - CorePro LED PLL HF 24W 830 4P 2G11



Lumen Maintenance Diagram - CorePro LED PLL HF 24W 830 4P 2G11



Life Expectancy Diagram - CorePro LED PLL HF 24W 830 4P 2G11

Lumen Maintenance Diagram - CorePro LED PLL HF 24W 830 4P 2G11

## CorePro LED PLL

